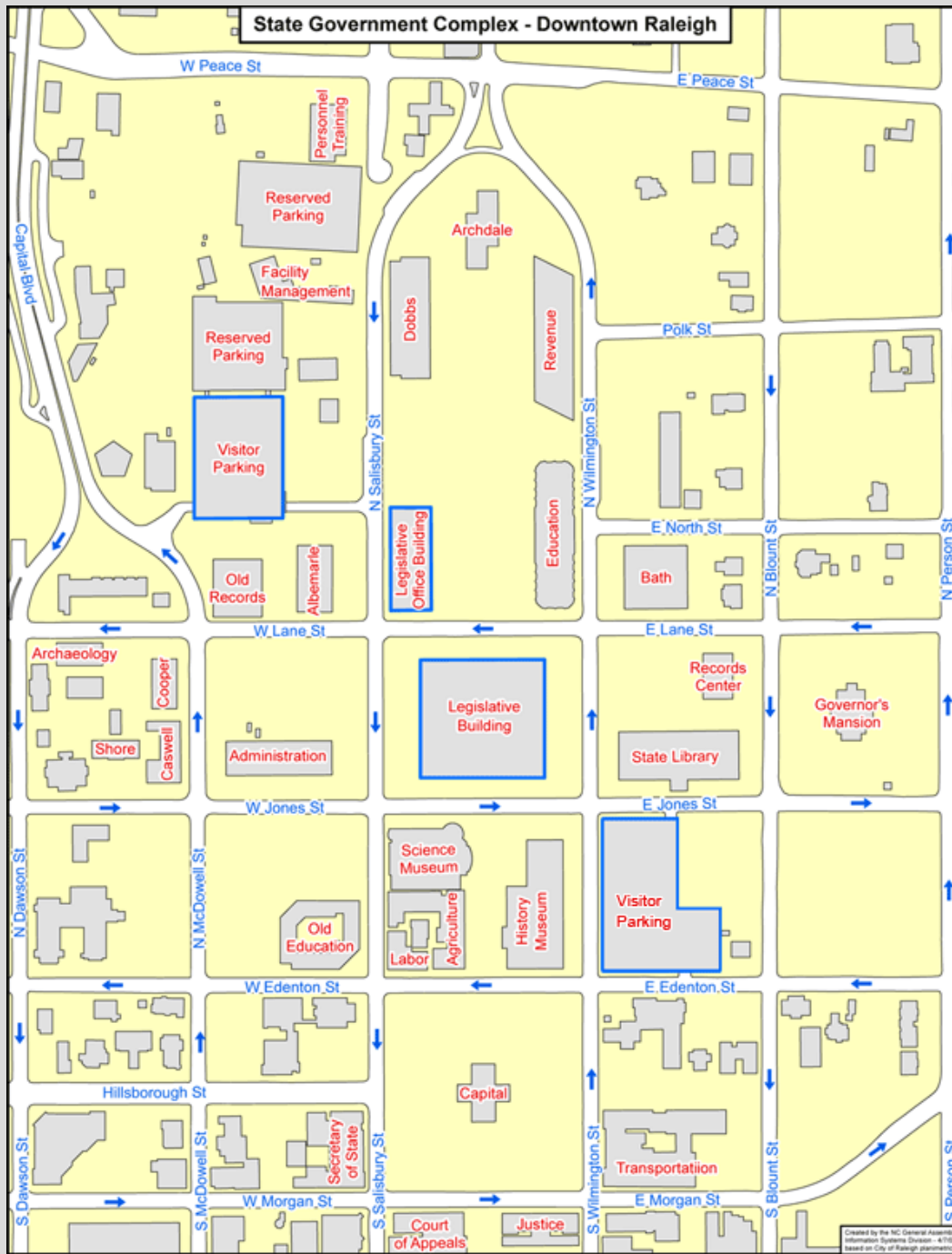




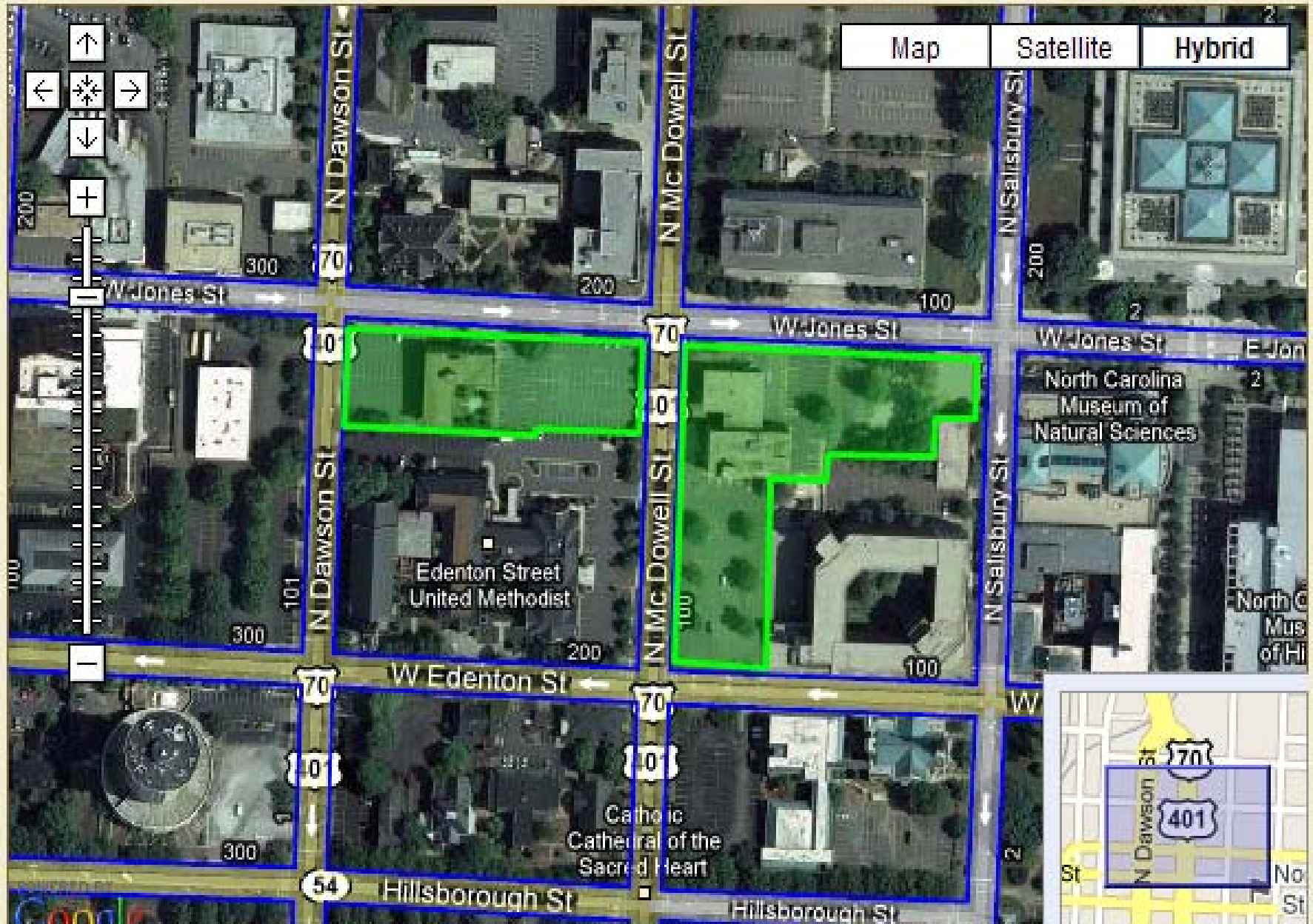
# Green Square Project

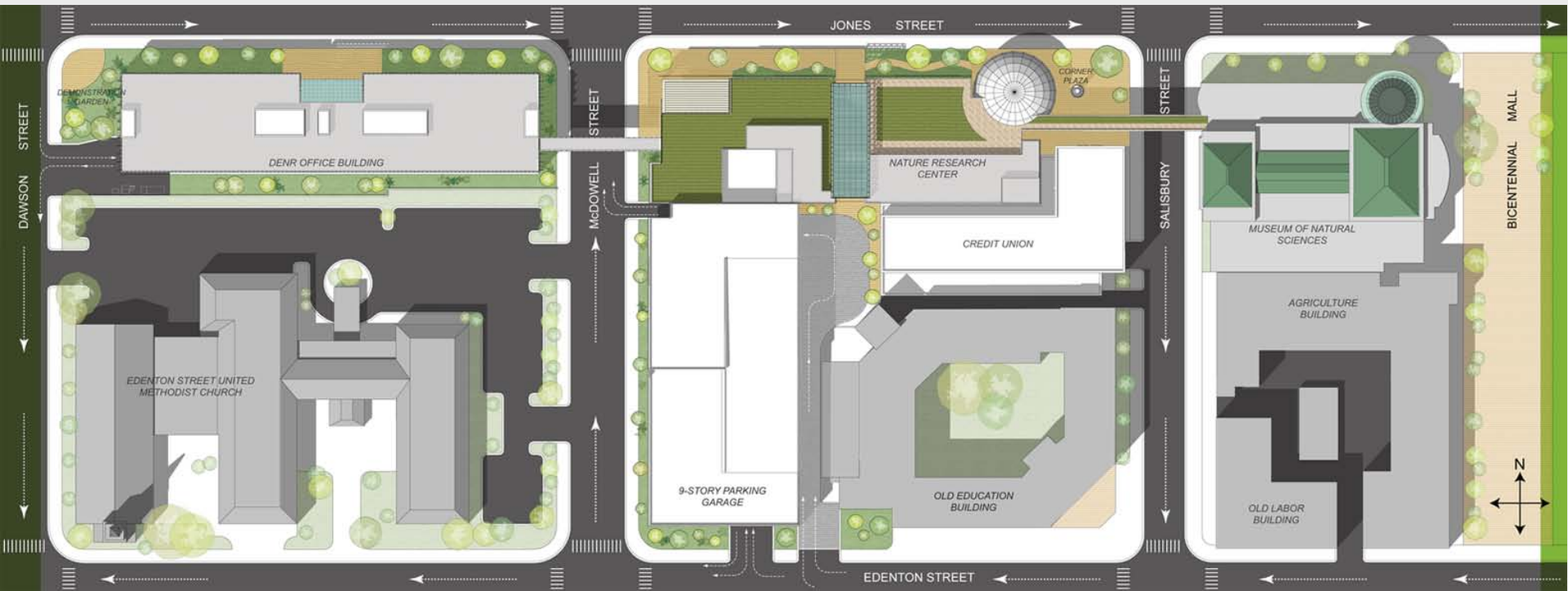
March 10, 2010

# State Government Complex - Downtown Raleigh



# Green Square Location








**EPA – RTP Campus**



**NC Wildlife Resources Commission**



**Missouri DNR Lewis & Clark Building**



ambient energy inc.

**Sustainable Design Charrette  
Green Square**



Renée J. Azerbegi, CEM, LEED-AP  
*President*  
ambient energy

Jen Burianek, LEED-AP  
*Sustainable Design Specialist*  
ambient energy



April 23, 2008

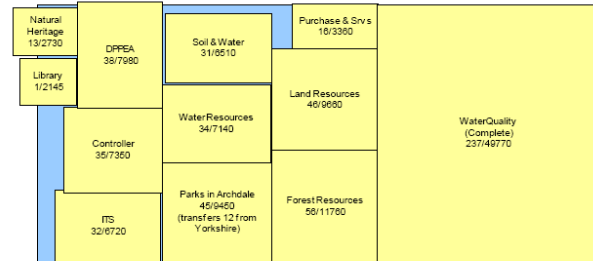
## LEED-NC V2.2 Checklist

- Sustainable Sites
- Water Efficiency
- Energy & Atmosphere
- Materials & Resources
- Indoor Environmental Quality
- Innovation & Design

	A	B	C	D	E	F	G	H	I	J
1		<b>Green Square Project</b>								
2		<b>Building Summary</b>								
3		<b>Department of Environmental and Natural Resources</b>								
4		<b>Department / Division</b>	<b>Personnel</b>			<b>Growth Rate '08-13</b>	<b>Net Square Feet</b>			<b>Net Area Factor 2013</b>
5			2008	2010	2013		2008	2013	2013	
6	1	Office of the Secretary	26	26	26	0.0%	7,553	7,553	7,553	291
7	2	Office of Public Affairs	5	5	5	0.0%	1,123	1,123	1,123	225
8	3	Budget, Planning and Analysis	8	10	10	4.6%	1,804	2,038	2,038	204
9	4	Office of the Controller	31	34	34	1.9%	6,409	5,709	5,709	168
10	5	Purchasing and Services	17	19	19	2.2%	3,339	3,347	3,347	176
11	6	Information Technology Services	50	56	61	4.1%	9,882	10,717	11,354	186
12	7	Customer Service Center	6	8	8	5.9%	1,063	1,202	1,220	152
13	8	Environmental Education	10	10	10	1.0%	2,067	2,241	2,241	224
14	9	Air Quality Division	147	147	147	0.0%	25,213	24,278	24,300	165
15	10	Pollution Prevention and Environmental Assistance	36	39	39	1.6%	5,314	5,655	5,655	145
16	11	Aquariums								
17	12	Parks and Recreation	56	63	71	4.9%	10,695	10,981	12,157	171
18	13	Human Resources	17	19	19	2.2%	2,861	3,087	3,105	163
19	14	Waste Management Division	199	207	207	0.8%	27,868	28,640	28,640	138
20	15	Clean Water Management Trust Fund								
21	16	Natural Resource Planning and Conservation	20	23	26	5.4%	3,584	4,149	4,566	176
22	17	Common Shared Areas					18,360	18,360	18,360	
23	18	Support Areas	3	3	3		8,784	8,784	8,784	
24	19									
25	20									
26	21									
27	22									
28	23									
29	24									
30	25									
31	26									
32	27									
33	28									
34	29									
35	30									
36	31									
37	32									
38	33									
39	34	<b>Total</b>	<b>631</b>	<b>669</b>	<b>685</b>	<b>1.7%</b>	<b>135,917</b>	<b>137,863</b>	<b>140,150</b>	<b>205</b>
40	35	<b>Building Grossing (+20%) (2)</b>					27,183	27,573	28,030	
41	36	<b>Total Staff &amp; Net Square Feet</b>	<b>631</b>	<b>669</b>	<b>685</b>	<b>1.7%</b>	<b>163,101</b>	<b>165,435</b>	<b>168,180</b>	<b>246</b>



Program Footprint Analysis:



Archdale Building  
125,560 nsf available  
124,575 nsf projected



Green Square  
132,450 nsf available  
133,560 nsf projected



U.S. GREEN BUILDING COUNCIL



LEED GOLD

2011

TM



**Questions?**





J. JIANG





# GENOMICS LAB





green square parking structure





**Questions?**

## **Past Challenges**

Square Footage Constraints  
Historical Height Restrictions  
Building Orientation  
Senate Bill 668 & LCCA  
Site Switch & Deck Adjacency  
AT&T Vault  
SECU Building  
2 Contractors

## **Future Challenges**

Open Office Plan  
Sharing Common Space  
Green Cleaning  
HVAC System  
Offices in Museum  
Green Policy Enforcement  
Bird Safety

## **What We Did RIGHT**

Dedicated Positions for Project  
LEED Checklist Leads the Project  
LEED Consultant  
Enhanced Commissioning  
Webcam  
Construction Monitor  
Construction Documentation Company  
Building Manager On Board Early  
Sustainability Team Input  
Internal Committees:

- Plumbing
- Renewable Energy
- Workstation
- Parking Deck
- IT
- Interiors

portal.ncdenr.org

Divisions & Contacts

EMPLOYEE SIGN IN

n.c.denr

North Carolina Department of Environment and Natural Resources



NC DENR ABOUT DENR CUSTOMER SERVICE FEEDBACK FAQs JOBS NCGOV.COM

## CURRENT Events

The Green Square Complex | BEACON | Tips to Conserve Water | N.C. Drought Council | Diversity | DENR Response APEX EQ | State Employees Combined Campaign | Storm Season 2007 | Express Permitting | more...

### Data, Statistics, Reports and Maps

- Ozone Forecast
- Maps
- Wetlands Data
- Pollution Prevention
- Museum Research
- more...

### Enforcement

- Environmental Enforcement
- Vehicle Inspections
- Stage 1 Vapor Recovery
- CAMA Violators
- more...

### Environmental Education

- DENR Library
- Consumer
- EE Clearinghouse
- EE Parent
- EE Centers
- EE Calendar
- more...

### Financial Assistance and Tax Credits

- Beach Access
- Soil and Water
- Solid Waste
- Brownfields
- Conservation Tax Credit
- more...

### News and Events

- DENR News Releases
- Air Quality Events
- CAMA Newsletter
- Pollution Prevention
- more...

### Permits, Licenses and Certifications

- One Stop Permit Assistance
- Air Quality Permits
- CAMA
- Mining Permit Fees
- more...

### Rules, Policies and Regulations

- Dam Safety
- Mining Laws
- Air Quality Rules
- Soil Erosion Law
- DENR Laws and Regulations
- more...

### Technical Assistance

- Pollution Prevention
- Small Business Assistance
- Energy Conservation
- Air Modeling and Meteorology
- more...









**Questions?**



**Jill Pafford - Project Manager**  
[jill.pafford@ncdenr.gov](mailto:jill.pafford@ncdenr.gov)

**Victoria Tillotson - Project Coordinator**  
[victoria.tillotson@ncdenr.gov](mailto:victoria.tillotson@ncdenr.gov)